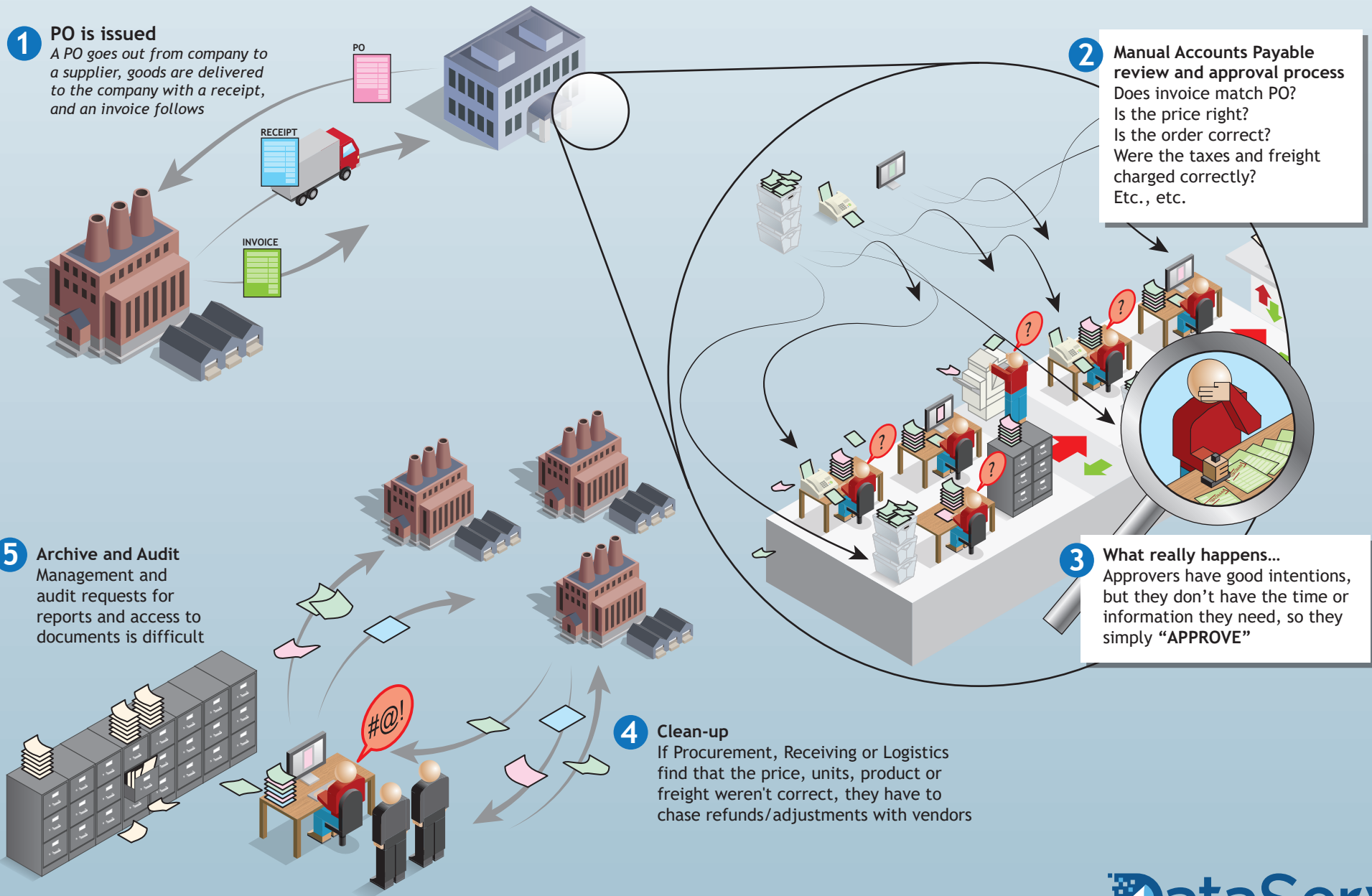
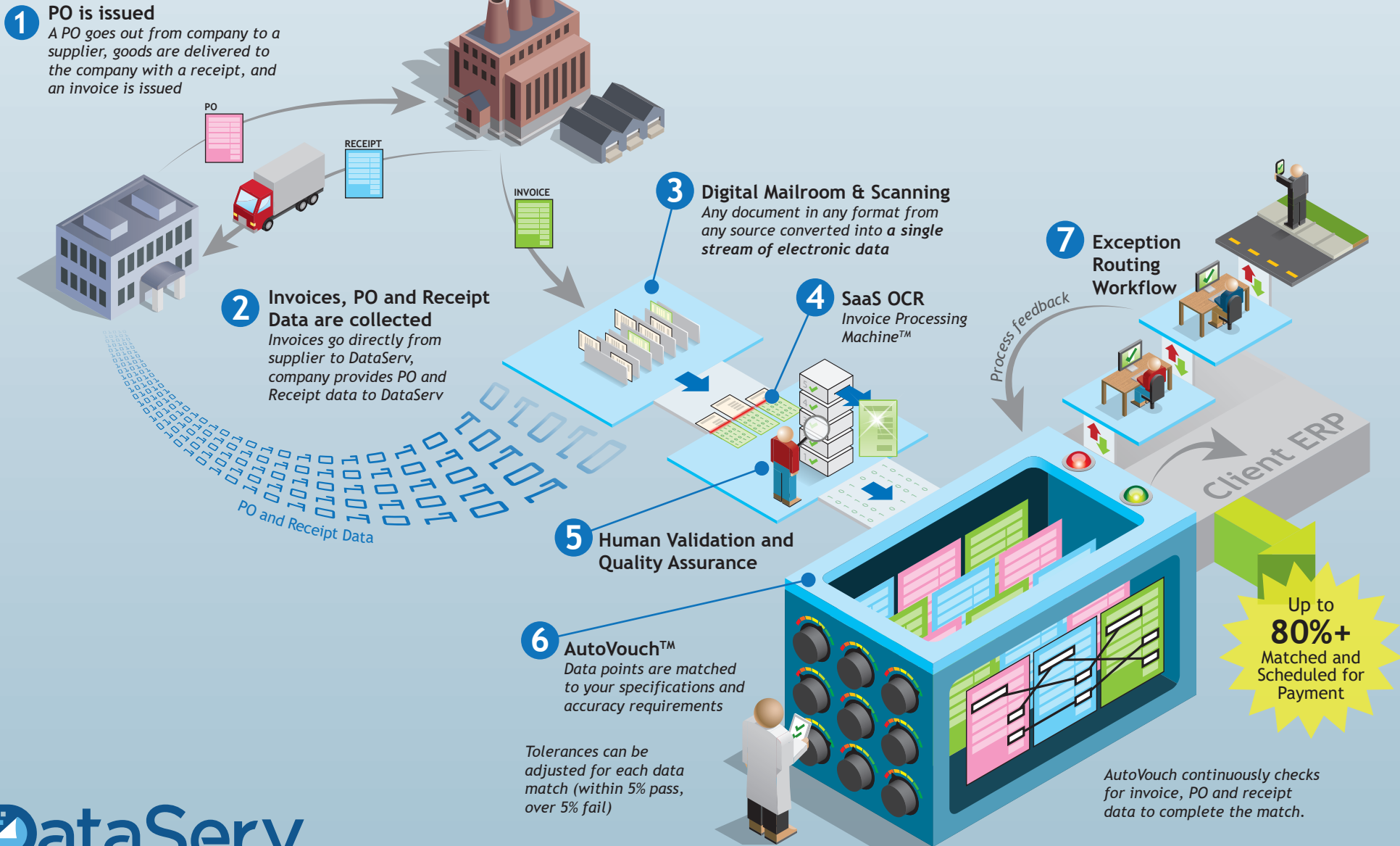


Typical PO/Invoice Approval Process **without DataServ**



Pre-ERP 2 & 3-way Match via AutoVouch™ by DataServ



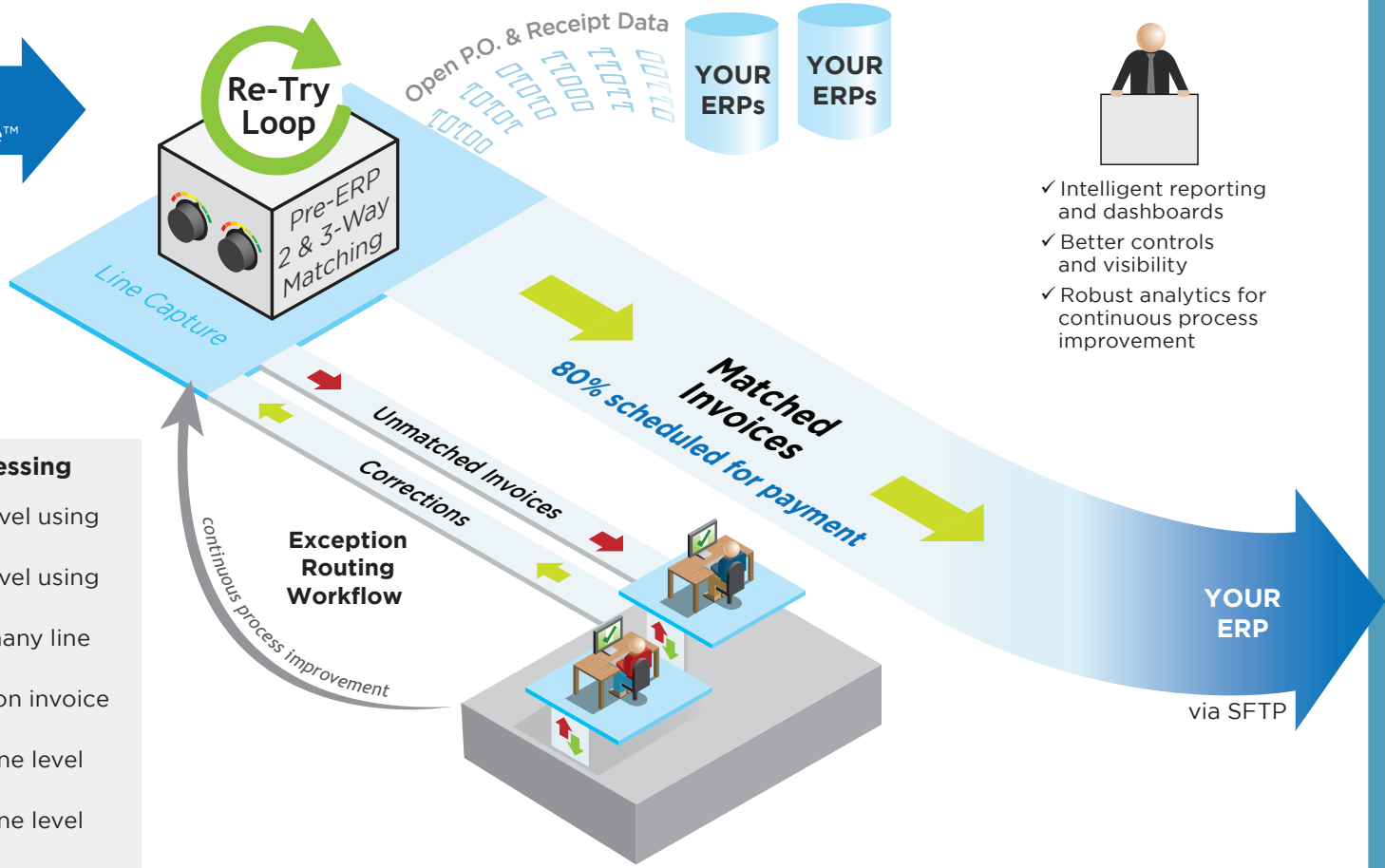
AutoVouch™ Process: A.I. for Invoices

AutoVouch continuously checks for invoice, PO, and receipt data to complete the match.

P.O. INVOICE DATA
from
Invoice Processing Machine™

Tolerances can be adjusted for each data match (within 5% pass, over 5% fail)

- AutoVouch Processing**
- Invoice & PO at line level using unit price
 - Invoice & PO at line level using extended amount
 - One line item PO to many line invoice
 - Flip Price & Quantity on invoice line
 - Invoice & Receipt at line level with part number
 - Invoice & Receipt at line level with match sets
 - Invoice & Receipt at line level using extended amount



- Intelligent reporting and dashboards
- Better controls and visibility
- Robust analytics for continuous process improvement

